

Regolante

Multi-key for tilt & turn hardware adjustment

FUNCTIONAL

A single accessory join all the tools for tilt & turn hardware adjustment

PRATICAL

All the keys can be extracted and used one by one

ERGONOMICAL

Grip made of nylon, comfortable and handily



1



2



3



4



5



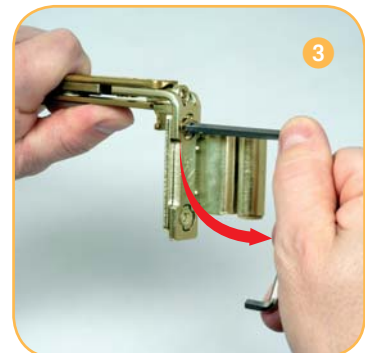
6



Movimentazione del cremone con quadro maniglia da 7 mm.



Inserimento ed estrazione del perno dal supporto forbice con inserto.

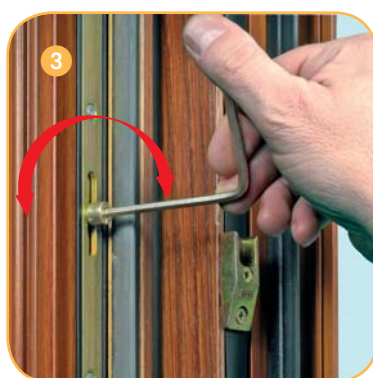


Assemblaggio dell'angolo forbice con chiave a brugola da 4 mm.

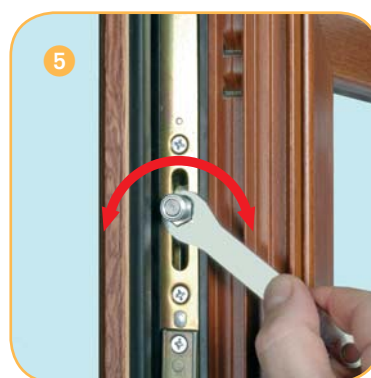
Regolante - Multi-key for tilt & turn hardware adjustment



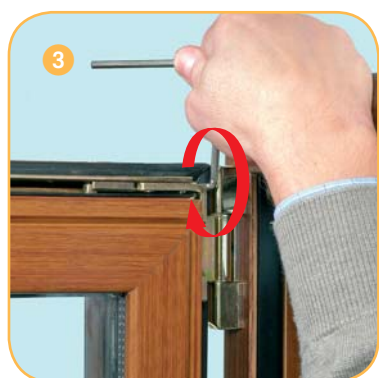
2,5 mm Allen wrench allows the adjustment (± 3 mm) of the DSS.



4 mm Allen wrench allows pressure adjustment (± 1 mm) of the roller cams.



11 mm fork key allows the pressure adjustment (± 1 mm) of the mushroom cams.



4 mm Allen wrench allows horizontal adjustment (5 mm pull and 2,7 mm push) of the TESI stay arm (practical even on 90° opening thanks to the short side of the key).



13 mm hexagonal wrench allows the horizontal adjustment of the $\varnothing 34$ stay arm (4 mm to pull for gap 4 and 7,5 mm to push for gap 12).



4 mm Allen wrench allows: TESI hinge vertical adjustment (- 2 mm downwards, + 3 mm upwards).



4 mm Allen wrench allows TESI hinge horizontal (± 2 mm) adjustment.



4 mm Allen wrench allows TESI hinge pressure ($\pm 1,5$ mm) adjustment.



Inside the REGOLANTE you can find 2 replacing inserts for the inserting and extraction of the pin from the stay support.

Description	Material	Finish	Code
Regolante	nylon	Red	A39405.00.01